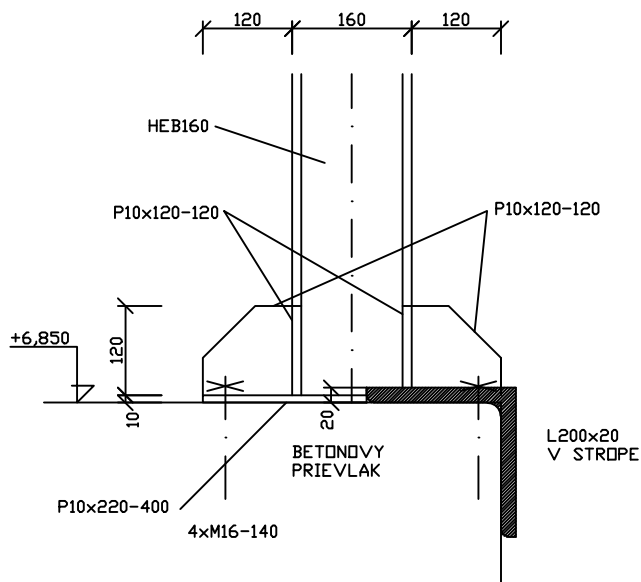


KOTVENIE STLPOV V OSI H,CH/8

2KS

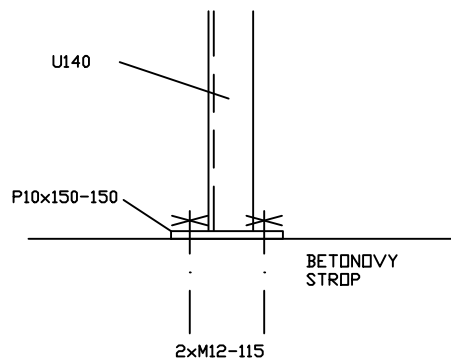
REZ



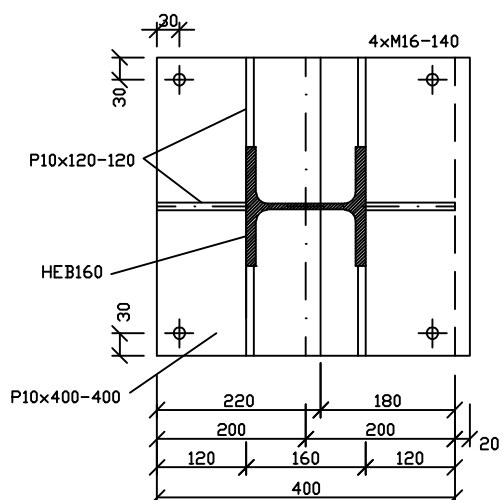
KOTVENIE DVERNEHO STLPIKA

9KS

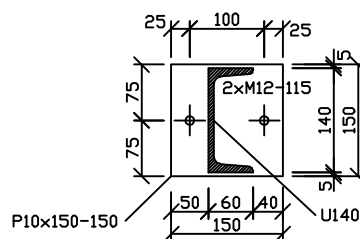
POHLAD



PÓDORYS



PÓDORYS



VÝKAZ KOTIEV DO BETONU:
M16-140mm, KS=8
M12-115mm, KS=20

NOSNE PRVKY ZVARIT ZVARDM HR. 10mm, VYSTUHY ZVARDM HR:6mm

OCEL: S235 NATER: ZAKLADNY+VRCHNY PROTIPOZIARNY

KOTVENIE VNUTORNÝCH STLPOV A DVERNEHO STLPIKA m1:10